

Client Focus

Information about our clients' Layher experience.

Layher® 

More Possibilities. The Scaffolding System.

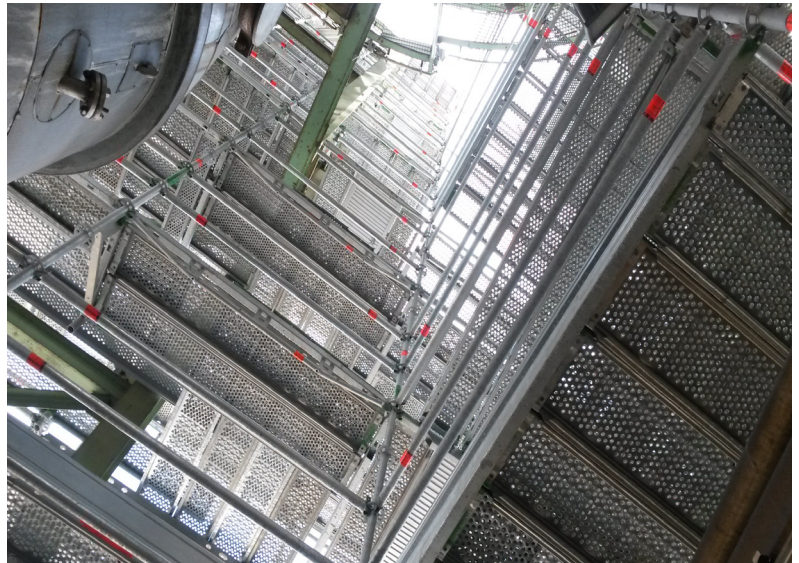
August 2021

UNLIMITED VERSATILITY

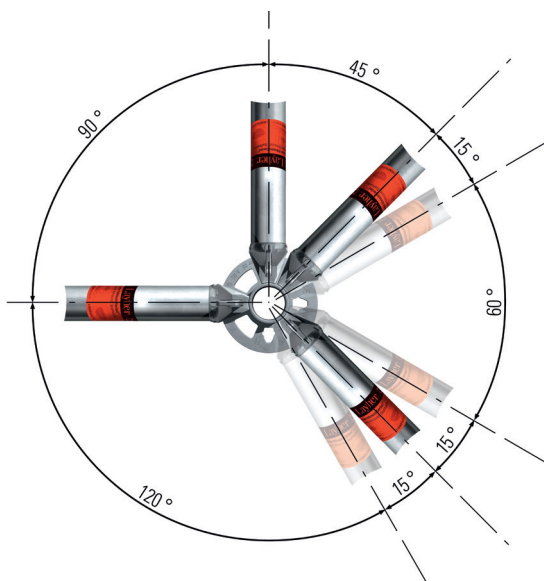
GBM NETWORK AT SASOL SECUNDA

Sasol is a global integrated chemicals and energy company spanning 30 countries who uses their expertise and selected technologies to safely and sustainably source, manufacture and market chemical and energy products globally. The Construction of R2,3 billion Sasol Two in 1976 saw the establishment of a new South African town – Secunda. Its Latin name, meaning second, is appropriate as it was the second town established by Sasol following Sasolburg.

One of our many esteemed clients in Secunda, GBM Network, has been applying the Layher Scaffolding System in Sasol Secunda for years. Layher's revolutionary Allround® Scaffolding is designed to solve complex problems by providing simple solutions.



GBM Network shared their experience with the Layher Scaffolding System for the past few years. Of the many benefits that Layher Scaffolding provides, the one that stood out the most for GBM Network was how much faster it was to assemble and dismantle the scaffolding system. The Layher Scaffolding System is lighter in weight when compared to other conventional scaffolding systems. With no bands, plates or wires required, this translated to easier assembly for GBM Network and improved productivity rates by 40% for the team.



Layher Allround® Scaffolding offers unlimited versatility. With 8 connections in one plane, automatic right-angles and flexible angle selection which self-locks during assembly, the Layher Allround® Scaffolding ensured that GBM Network were able to erect the scaffold around the radius of the bends of the tanks at Sasol with ease.





GBM Network also applauded how easy it was to use the Layher Scaffolding System. Diagonal braces ensured a straight scaffold with no couplers on braces and their boards also carried less sand from sand blasting.

Despite Layher Scaffolding being utilized on site in Sasol Secunda for more than 6.5 years, GBM Network pointed out that the equipment is still in a very good condition, with no maintenance required, while other conventional scaffolding systems needed to be replaced/maintained almost annually. Layher Allround® Scaffolding is hot-dip galvanized and is ideal for demanding scaffolding applications and where conventional scaffolding technology cannot be used optimally and economically.

GBM Network described their experience with the Layher South Africa as “excellent” with high praise for our team and after-sales support.



As we look back at the many successes we have achieved with our strategic partners and clients like GBM Network in Secunda, we can't help but look toward the future as we continue to expand our reach as pioneers of advanced scaffolding systems in South Africa and beyond.